



Managing Found Baby Birds



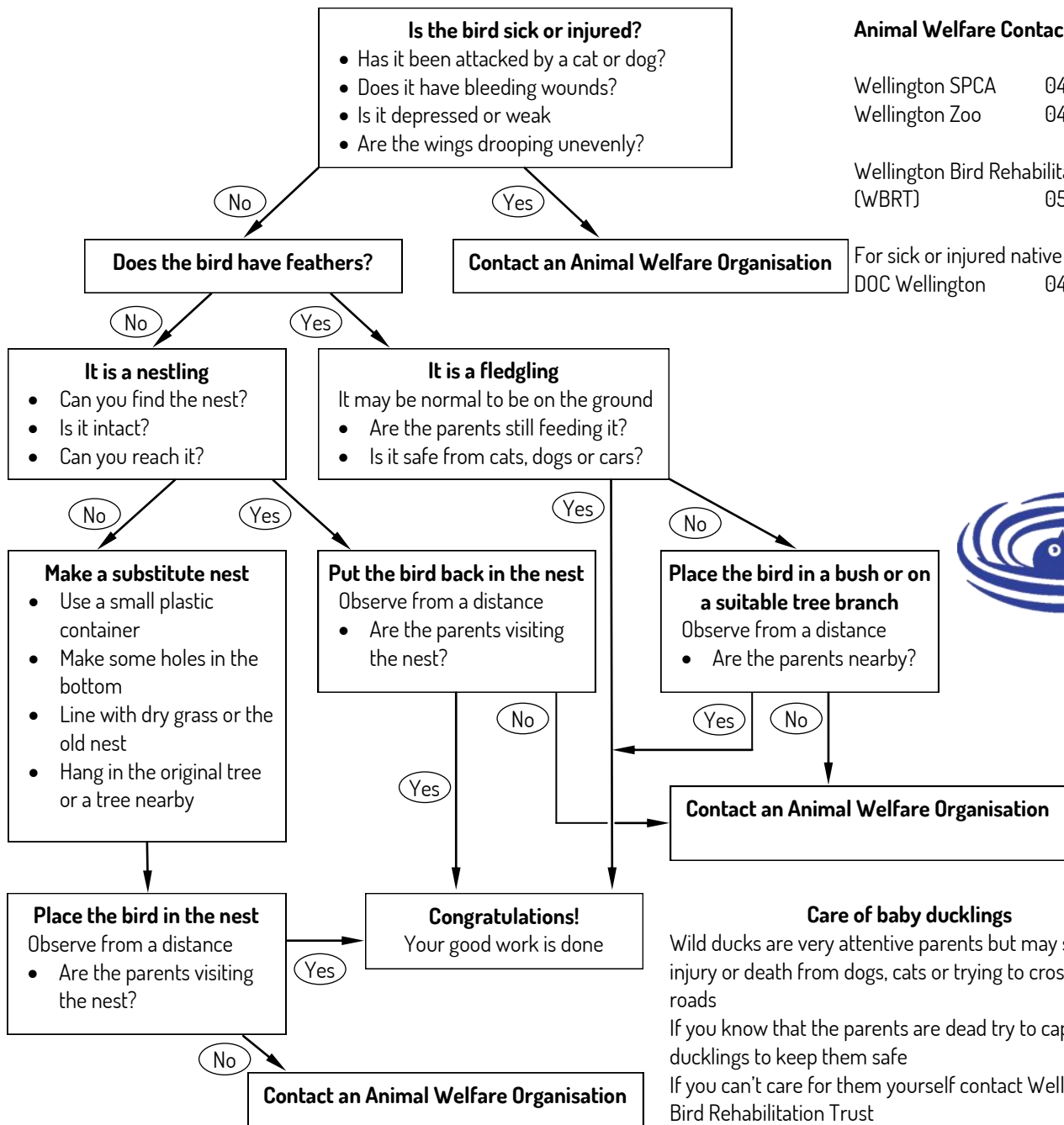
PETVET clinics are well-equipped, full-service, small animal veterinary practices providing comprehensive diagnostic, medical, surgical and dental care. We aim to offer quality service, giving your pet the maximum opportunity to lead a long and happy life.

ALL THE CARE YOUR PET NEEDS!



How to manage found baby birds?

The best chance for survival is to re-unite the baby with its parents. The Department of Conservation may need to be informed if the bird is a New Zealand native. This chart outlines the best way to help a baby bird.

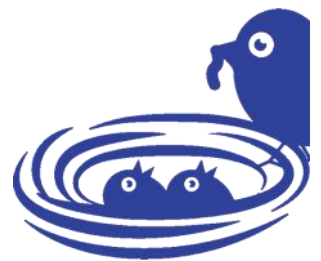


Animal Welfare Contact Details

Wellington SPCA 04 3898044
Wellington Zoo 04 3894577

Wellington Bird Rehabilitation Trust (WBRT) 0508692473

For sick or injured native birds
DOC Wellington 04 471 0726



Care of baby ducklings

Wild ducks are very attentive parents but may suffer injury or death from dogs, cats or trying to cross busy roads

If you know that the parents are dead try to capture the ducklings to keep them safe

If you can't care for them yourself contact Wellington Bird Rehabilitation Trust

If the parents are nearby try to place the ducklings in a safe place and monitor them until they are reunited with their parents

If this does not occur after a reasonable period of time capture them to keep them safe and contact Wellington Bird Rehabilitation Trust (WBRT): 0508692473

CLINIC LOCATIONS

PETVET Lower Hutt
70 Pharazyn Street, Melling
Lower Hutt 5010
+64 4 5698830

PETVET Silverstream
9 Kiln Street, Silverstream
Upper Hutt 5019
+64 4 5277552